

引我更親近

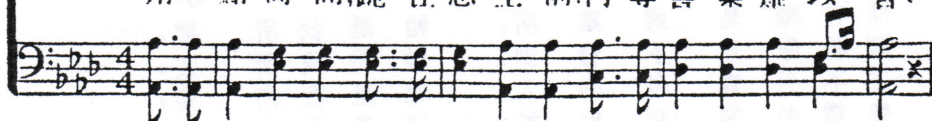
Draw Me Nearer

FANNY J. CROSBY

W. H. DOANE



1. I am Thine, O Lord, I have heard Thy voice, And it told Thy love to me.
 2. Con-se-crate me now to Thy serv-ice, Lord, By the power of grace di-vin.
 3. O the pure de-light of a sin-gle hour That be-fore Thy throne I spend.
1. 我屬祢, 恩主, 我聞祢言語, 言明祢愛我全備;
 2. 分別我爲聖, 專爲主所用, 倚靠主大能恩寵;
 3. 用一點時間, 跪在恩主前, 何等喜樂難以言:

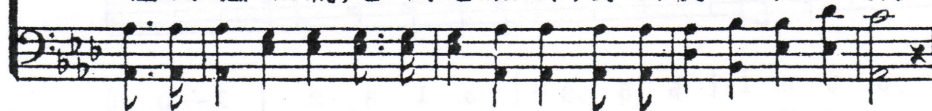


4. There are depths of love that I can-not know Till I cross the nar-row sea,
4. 何等深主愛, 我今不了解, 要等我渡過世海:



But I long to rise in the arms of faith, And be clo-ser drawn to Thee.
 Let my soul look up with a stead-fast hope, And my will be lost in Thine.
 When I kneel in prayer, and with Thee my God, I com-mune as friend with friend.

我切望興起, 有信心勇氣, 被吸引更親近祢;
 助我往上看, 有堅固盼望, 我心尊主爲至上。
 靈與靈相親, 心與心相印, 友與友相吸相引。

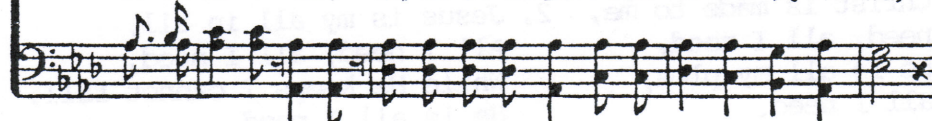


There are heights of joy that I may not reach Till I rest in peace with Thee.
 何等天樂, 我今難測度, 要等我息了工作。

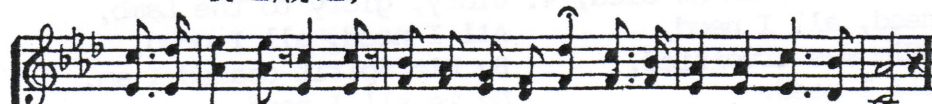
副歌



Draw me near - er, near-er, bless-ed Lord, To the cross where Thou hast died,
 引我親 近, 親近我恩主, 到主受死寶架前,



near-er, near-er,
 親近, 親近,



Draw me near-er, near-er, near-er, bless-ed Lord, To Thy pre-cious, bleed-ing side.
 引我親近, 親近, 更親近恩主, 到主流寶血身邊。

